



THOMSON

user
manual

Safety Information English

For UK Only
CONNECT THE MAIN LEAD INTO A MAINS POWER SOCKET
POWER SUPPLY 230V. It must not be connected to D.C. mains.

Note: The mains lead of the set is fitted with a moulded plug. If the mains socket are not compatible or if for any reason the plug is removed please follow the directions below. The moulded plug cannot be repaired and if removed must be disposed of safely.
DO NOT under any circumstances plug the severed plug into any mains socket as this could result in electric shock.

Important: If the plug is removed, rewire the new plug as follows:
The wires in the mains plug are coloured in accordance to the following code:
BLUE = NEUTRAL/BROWN = LIVE

If the colours of the wires in the mains lead of this apparatus may not correspond with the coloured markings identifying the terminals in your plug, proceed as follows:
BLUE wire to the terminal coded N (Neutral) or coloured black.
BROWN wire to the terminal coded L (Live) or coloured red.
DO NOT make any connection to the terminal in the plug which is marked by the letter E or by the earth symbol or coloured green or green and yellow.

A fused plug must be fitted with a 3A fuse approved by ASTA or BS1362 and fuse covers must be always be securely replaced. If you set does not work, the fuse may be blown.

Please respect the environment. Before throwing any batteries away, consult your distributor who may be able to take them back for specific recycling.
Have a Blast - Just Not in Your Eardrums! Make sure you turn down the volume on the unit with the existing unit on headphones. Increase the volume to the desired level only after headphone are in place.

CAUTION! Invisible laser radiation when open. Avoid exposure to beam. Class 1 laser product. This system must be opened only by qualified technicians to prevent accidents caused by the laser beam.
LASER λ = 780 nm, P max = 5 mW
Rating information: At bottom/rear of the unit. This unit comply with the existing requirements.

In accordance with the rating plate of the unit, this unit complies with current standards concerning electrical safety and electromagnetic compatibility.

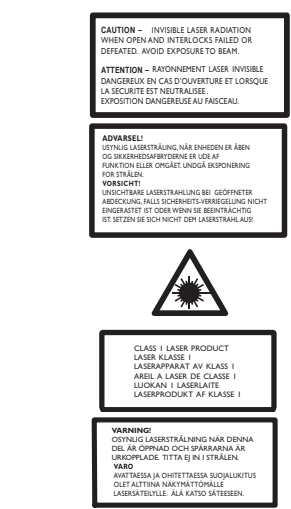
Safety Information

This symbol means that your inoperative electronic appliance must be collected separately and not mixed with the household waste. The Thomson Unit has implemented a specific collection and recycling system for which manufacturers are responsible.

This appliance has been designed and manufactured with high quality materials and components that can be recycled and reused.
Electrical and electronic appliances are liable to contain parts that are necessary in order for the system to work properly but which can become a health and environmental hazard if they are not handled or disposed of in the proper way. Consequently, please do not throw out your inoperative appliance with the household waste.

If you are the owner of the appliance, you must deposit it at the appropriate local collection point or leave it with the vendor when buying a new appliance.
• If you are a professional user, please follow your supplier's instructions.
• If the appliance is rented to you or left in your care, please contact your service provider.

Help us protect the environment in which we live!



THE LIGHTING HEAD AND ARROW HEAD WITHIN THE TOP OF THE REMOTE CONTROL IS A WARNING. BE SURE TO READ THE INSTRUCTIONS TO USE THE REMOTE CONTROL. THE LIGHTING HEAD AND ARROW HEAD WITHIN THE TOP OF THE REMOTE CONTROL IS A WARNING. BE SURE TO READ THE INSTRUCTIONS TO USE THE REMOTE CONTROL.

Important Information

Safety Precautions

- Never open the cabinet under any circumstances. Any repairs or internal adjustments should be made only by a trained technician.
- Never operate this product with the cabinet removed.
- Do not use your system immediately after transporting it from a cold place to a warm place, as condensation may cause the system to malfunction.
- Keep your unit away from humid areas and abnormally hot places.
- Do not touch the player with wet hands. If any liquid enters the player cabinet, take the player to a trained technician for inspection.
- This compact disc player uses a laser to read the music on the disc. The laser mechanism corresponds to the cartridge and stylus of a record player. Although this product incorporates a laser pick-up lens, it is completely safe when operated according to directions.
- Discs rotate at high speed inside the player. Do not use damaged, warped, or cracked discs.
- Do not touch the pick-up lens which is located inside the disc compartment. To keep dust from collecting on the pick-up lens, do not leave the compartment door open for an extended period of time. If the lens becomes dirty, clean it with a soft brush, or use an air blower brush designed for camera lenses.
- The apparatus shall not be exposed to dripping or splashing and that no objects filled with liquids, such as vases, shall be placed on the apparatus.
- Minimum distance around the apparatus for sufficient ventilation.
- The ventilation should not be impeded by covering the ventilation opening with items, such as newspaper, tablecloths, curtains, etc.
- No naked flame sources, such as lighted candles, should be placed on the apparatus.

Attention should be drawn to the environmental aspects of battery disposal.

The use of apparatus in moderate climates.

Important Battery Information

- Remove the batteries to avoid leakage if you do not use your remote control for more than one month.
- Discard leaky batteries immediately as leaking batteries may cause skin burns or other personal injuries. Dispose of batteries in the proper manner, according to provincial and local regulations.
- Any battery may leak electrolyte under the following circumstances:
 - if mixed with a different battery type,
 - if inserted incorrectly,
 - if all batteries are not replaced at the same time,
 - if disposed of in fire, or
 - if an attempt is made to charge a battery not intended to be recharged

Headset Safety

- Do not play your headset at high volume. Hearing experts warn against extended high-volume play.
- If you experience ringing in your ears, reduce volume or discontinue use.
- You should use with extreme caution or temporarily discontinue use in potentially hazardous situations. Even if your headset is an open-air designed to let you to hear outside sounds, do not turn up the volume so high that you are unable to hear what is around you.

Don't Infringe

This product should only be used for the purposes for which it is sold, that is, entertainment, violating no copyright law. Any attempts to use this product for which it is not intended is unlawful and therefore not condoned by Thomson.

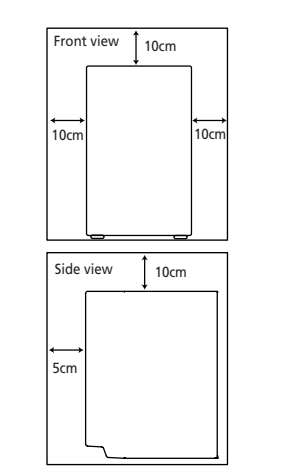
Before You Begin

Unpacking Your System

- You should have:
 - One main unit (with 2 speakers);
 - One remote control;
 - One user's guide;
 - One Thomson Warranty Card

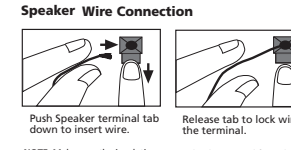
Installation

To ensure sufficient ventilation, keep the spacing shown as below:



Connecting the Speakers

When connecting the speakers, match the red wires to the red jacks and the black wires to the black jacks.

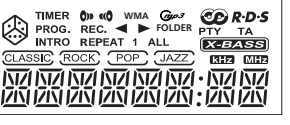


Using the Antenna

Before you use your audio system, you'll want to make sure the FM antenna is positioned properly. The FM antenna is the coiled wire connected to the back of the unit. Uncoil it, making sure it is fully extended if you even want to tape it to the wall behind the unit, if possible. The higher, the better! For better AM reception, move or rotate the unit.

Settings

Display



Setting the Clock

- Press **CLOCK-TIMER** to enter clock setting mode. "CLK --:00" is displayed.
- Press **▲** or **▼** to set the hour.
- Press **PROG-SET-CLEAR** to shift to the minute digits.
- Press **▲** or **▼** to set the minute.
- Press **PROG-SET-CLEAR** to confirm the setting.

Setting Sleep Time

- Repeat steps 2-5 to set timer off hour and minute.
- Press **PROG-SET-CLEAR** to confirm settings. Timer will be activated automatically after settings are finished.

Activating the Timer

Press and hold **CLOCK-TIMER** for 2 seconds on the main unit to activate and deactivate the timer function.

Note: Timer cannot be set or activated if clock time is not set. SET CLK will flash on the display when you try to activate the timer. Follow instructions under "Setting the Clock" to set clock.

Setting the Timer

- Press **CLOCK-TIMER** twice to enter timer setting mode. "ON --:00" is displayed.
- Press **▲** or **▼** to set the hour.
- Press **PROG-SET-CLEAR** to move to the minute digits.
- Press **▲** or **▼** to set the minute digits.
- Press **PROG-SET-CLEAR** to move to source selection.
- Press **▲** or **▼** to select source (Tuner / CD / Tape / Rec TU). If Rec TU is selected, "TU PR 1" will be displayed. Press **▲** or **▼** to select a preset station to record.
- Press **PROG-SET-CLEAR** to move to volume setting.
- Press **▲** or **▼** to select desired volume level.
- Press **PROG-SET-CLEAR** to move to timer off time setting. "OFF --:00" is displayed.

Settings

Setting Sleep Time

You can select the time interval in minutes before the unit turns off automatically.

Press **SLEEP** on the remote control to toggle among OFF, 90, 80, 70, 60, 50, 40, 30, 20, and 10 minutes.

View Remaining Sleep Time

When sleep is activated, press **SLEEP** once to view remaining sleep time in minutes.

Adjust Sleep Time

Press **SLEEP** again when the remaining sleep time is displayed to change sleep time.

Note: Sleep is automatically deactivated when the unit is turned off.

Sound Features

Preset Equalizer Curves

Press **EQ** to toggle among FLAT, CLASSIC, ROCK, POP and JAZZ. The selection is highlighted.

X-Bass

Press **X-BASS** to turn on/off the x-bass feature. The **X-BASS** icon is displayed.

Muting Audio

Press **MUTE** to silence playback.

CD Player

Random Playback

Press **▶** to turn on/off the playing of tracks in random order. (Remote Only)

Sampling Tracks

Intro Play lets you enjoy the CD tracks for 10 seconds. When the last track has played for 10 seconds, the Intro Plays stop. Press **INTRO** on the remote control to enable or disable the function.

Repeat

Press **DISPLAY** repeatedly on the remote control to select among REPEAT 1 (repeat current track), REPEAT (repeat all tracks) and repeat off mode.

Setting Up a CD Program

Note: A maximum of 20 tracks can be programmed.

- Select CD mode by pressing **CD**.
- In stop mode, press **PROG-SET-CLEAR** after the CD has been loaded into the system. The message "0 PR01" will be shown on the display.
- Press **▲** or **▼** to select a track to be stored into memory location 1.

Setting Sleep Time

Press **SLEEP** on the remote control to toggle among OFF, 90, 80, 70, 60, 50, 40, 30, 20, and 10 minutes.

View Remaining Sleep Time

When sleep is activated, press **SLEEP** once to view remaining sleep time in minutes.

Activating the Timer

Press and hold **CLOCK-TIMER** for 2 seconds on the main unit to activate and deactivate the timer function.

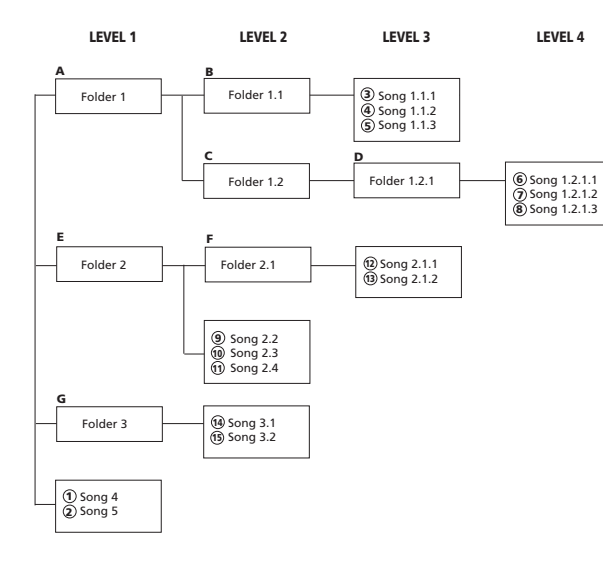
Setting the Timer

- Press **CLOCK-TIMER** twice to enter timer setting mode. "ON --:00" is displayed.
- Press **▲** or **▼** to set the hour.
- Press **PROG-SET-CLEAR** to move to the minute digits.
- Press **▲** or **▼** to set the minute digits.
- Press **PROG-SET-CLEAR** to move to source selection.
- Press **▲** or **▼** to select source (Tuner / CD / Tape / Rec TU). If Rec TU is selected, "TU PR 1" will be displayed. Press **▲** or **▼** to select a preset station to record.
- Press **PROG-SET-CLEAR** to move to volume setting.
- Press **▲** or **▼** to select desired volume level.
- Press **PROG-SET-CLEAR** to move to timer off time setting. "OFF --:00" is displayed.

CD Player

mp3/WMA Playback Sequence

Refer to the diagram below for playback sequence details on multi-level folder structure.



Note: Folder playback sequence is indicated by the letters from A to G. Song playback sequence is indicated by the number 1 to 15 in front of the song name.

Tape Player

Playing Cassette Tape

- Press **TAPE** to select tape mode.
- Press on the **OPEN/CLOSE** area to open the deck door.
- Load a cassette tape into the deck. Then, lightly press the deck door closed.
- Press **PLAY/PAUSE** to start playback.
- Press **▲** or **▼** to select the tape at the desired position.
- Press **STOP** to stop.

Recording a CD

- Press **CD** to select CD mode.
- Press on the **OPEN/CLOSE** area to open the deck door.
- Press **REC** to record. The REC icon will flash on the display. Press **REC** again to start recording. CD automatically starts playback at the same time.
- Press **STOP** to stop recording.

Reset Tape Counter

Press **PROG-SET-CLEAR** to reset counter.

Recording a CD

- Press **CD** to select CD mode.
- Press on the **OPEN/CLOSE** area to open the deck door.
- Press **REC** to record. The REC icon will flash on the display. Press **REC** again to start recording. CD automatically starts playback at the same time.
- Press **STOP** to stop recording.

Reset Tape Counter

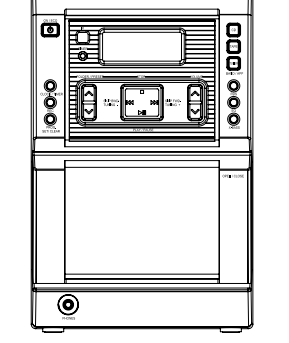
Press **PROG-SET-CLEAR** to reset counter.

Troubleshooting Tips

Problem	Solution	Problem	Solution
System will not turn on	• Check power cord for a secure connection. • Unplug the unit for a moment, and then plug into power source again. • Check the outlet by plugging in another device.	CD sound skips	• Clean the disc. • Check disc for warping, scratches, or other damage. • Check if something is causing the system to vibrate. If so, move the system. • Make sure the speakers are at least 3 feet away or on a different surface from the main unit.
No sound	• Increase the volume setting. • Check connection to speakers. • Check that you have selected the appropriate function: CD, TAPE, Tuner. • Make sure mute is off. • Make sure headphones are not plugged in.	CD that will not respond	• Switch to another function (TAPE, Tuner) and then back to CD. • Inspect the tape head, clean it if necessary.
Poor radio reception	• Check antenna connection. • Remove any electrical appliances, such as hair dryer, vacuum cleaner, microwave, fluorescent lights.	Distorted or noisy tape recordings	• Check that the batteries are properly installed. • Replace weak batteries. • Check the system is plugged into power source.
CD does not play	• Check that CD is in the tray. • Check that CD label is facing up. • Check that PAUSE mode is not on. • Check that CD function is selected. • Use CD lens cleaner. • Clean the disc. • Try another disc.	Remote control does not work	• Move antenna. • Check that the batteries are properly installed. • Replace weak batteries. • Check the system is plugged into power source. • Point the remote directly at the system's front panel. • Move closer to the system. • Remove any obstacles between the remote and the system.

General Controls

Front View



Top View



Top View

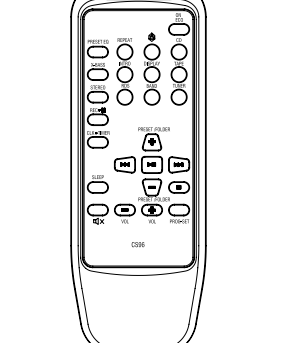
OPEN/CLOSE - Press to open the CD compartment door.

Front View

ON-ECO - Turns off the unit. Remember to unplug the power cord from the power outlet if you are not going to use the system for some time. Press and hold to enter ECO mode. In ECO mode, the power consumption is below 3W.
CD - Selects CD mode.
TAPE - Selects tape mode.
TUNER/BAND-APP - Selects tuner mode; selects radio band in tuner mode; begins auto preset programming.
RDS - In Tuner mode - Shows RDS information in FM broadcast (station name (RT), station type (PTY) and clock time (CT)).
CLOCK-TIMER - Shows clock time and timer on/off time; enters clock and timer setting mode; enables or disables timer mode.
X-BASS - Enables / disables X-Bass.
REC - Starts/pauses recording from CD / Tuner mode.
SKIP BACKWARD / **SKIP FORWARD** - In CD mode - skips backward or forward to the other tracks.
In Tape mode - Rewinds or fast forwards tape.
In Tuner mode - Searches down or up radio frequency.
STOP - In CD mode - stops CD playback.
In Tape mode - Stops tape playback.
PLAY/PAUSE - In CD mode - Plays and pauses CD playback.
In Tape mode - Plays and pauses tape playback.
PROG-SET-CLEAR - Enters program setting mode; confirms your settings; clears settings.
PRESET / FOLDER - In Tuner mode - Selects preset station.
In mp3 / WMA CD mode - Selects the previous and next folder.
EQ - Selects among different sound effects (flat / classic / rock / pop / jazz).
VOLUME - Adjusts the sound level.
PHONES - Jack for connecting headphones.

General Controls

Remote Control



TAPE - Selects tape player.
STEREO - Toggles stereo and mono mode in FM tuner.
CLK-TIMER - Enters clock and timer setting mode.
SLEEP - Selects sleep time.
BAND - Selects radio bands; starts auto preset programming.
TUNER - Selects radio tuner.
REC-|| - Starts recording or pauses recording.
CLK-TIMER - Enters clock and timer setting mode.
SLEEP - Selects sleep time.
PRESET / FOLDER - In Tuner mode - Selects next / previous preset stations. In mp3 / WMA CD mode - Selects the next / previous folder.
SKIP BACKWARD / **SKIP FORWARD** - In Tuner mode - Searches down or up radio frequency. In CD mode - Skips to the previous or next track.
PLAY/PAUSE - In CD mode - Plays disc and pauses CD playback.
In Tape mode - Plays tape and pauses tape playback.
STOP - Stops CD and tape playback.
MUTE - Cuts and restores sound output.
VOL + / - - Turns up or down volume level.
PROG-SET - Enters program setting mode; confirms your settings; clears preset station in tuner programming mode; clears CD program in CD programming mode and resets tape counter in tape mode.

ON-ECO

EQ - Selects among different sound effects (flat / classic / rock / pop / jazz).
REPEAT - In CD mode - toggles repeat options (repeat disc / repeat track / repeat off).
MIX - Selects random playback in CD mode.
CD - Selects CD player.
X-BASS - Enable and disable X-Bass.
INTRO - Selects intro play in CD mode.
DISPLAY - In normal audio CD mode - toggles among displaying track elapsed time, track remain time and disc remain time. In mp3 / WMA CD mode - toggles among displaying FILE name, FOLDER name, TITLE, ARTIST and ALBUM. In FM tuner mode - toggles RDS station information (Frequency, RDS name, Radio text, RDS type, Clock time, RDS day and PI code).

Installing Batteries

The remote control must be inserted with 2 "AA" or "UM-3" or "RS" batteries prior use.

CD Player

Loading a Disc

- Press **CD** to select CD mode.
- Press down on the **OPEN/CLOSE** area on the top of the unit to open the CD compartment door.
- Insert a disc with the label facing up.
- Close the CD compartment door.

Track Information

- For normal audio CDs, press **DISPLAY** on the remote control repeatedly during playback to display track remain time, disc remain time and track elapsed time.
- For mp3 / WMA discs, press **DISPLAY** on the remote control during playback repeatedly to display the following song information:
 - FILE name
 - FOLDER name
 - TITLE
 - ARTIST
 - ALBUM

Notes on mp3/WMA Discs:

- Use mp3 as the extension when converting audio files into mp3 for saving onto CD-RW or CD-ROM, e.g. Abc08.mp3. Do not use any other extension e.g. .doc, .pdf.
- Do not use the .mp3 extension for other text or non-audio data files as this may result in serious malfunction and harmful noise interference.
- For better quality in mp3 disc playback, the CD quality should be recorded 128Kbps or above.
- Disc data size > 650MB is not recommended.
- Total files should not exceed 412 and the total folders should not exceed 100. It also depends on the length of the file/folder names.
- For mixed mode discs, only one mode will be selected for playback depending on the recording format.
- To ensure good performance, wait until the disc changes completely reads the disc before proceeding.
- mp3 files in CD ROM EXTRA format disc cannot be recognized.
- mp3 file names are limited to 32 characters.
- Folder names are limited to 10 characters.

Notes on CD-R/RW

- Do not affix any type of labels to either side (recordable or labeled side) of a CD-R/RW disc as this may result in the unit malfunctioning.
- Playback capability for CD-RW discs may vary due to variations in the quality of the CD-RW disc and the recorder used to create the disc.

Note:

Be sure to remove all discs from the disc compartment before moving or transporting the unit!

CD Player

Loading a Disc

- Press **CD** to select CD mode.
- Press down on the **OPEN/CLOSE** area on the top of the unit to open the CD compartment door.
- Insert a disc with the label facing up.
- Close the CD compartment door.

Track Information

- For normal audio CDs, press **DISPLAY** on the remote control repeatedly during playback to display track remain time, disc remain time and track elapsed time.
- For mp3 / WMA discs, press **DISPLAY** on the remote control during playback repeatedly to display the following song information:
 - FILE name
 - FOLDER name
 - TITLE
 - ARTIST
 - ALBUM

Notes on mp3/WMA Discs:

- Use mp3 as the extension when converting audio files into mp3 for saving onto CD-RW or CD-ROM, e.g. Abc08.mp3. Do not use any other extension e.g. .doc, .pdf.
- Do not use the .mp3 extension for other text or non-audio data files as this may result in serious malfunction and harmful noise interference.
- For better quality in mp3 disc playback, the CD quality should be recorded 128Kbps or above.
- Disc data size > 650MB is not recommended.
- Total files should not exceed 412 and the total folders should not exceed 100. It also depends on the length of the file/folder names.
- For mixed mode discs, only one mode will be selected for playback depending on the recording format.
- To ensure good performance, wait until the disc changes completely reads the disc before proceeding.
- mp3 files in CD ROM EXTRA format disc cannot be recognized.
- mp3 file names are limited to 32 characters.
- Folder names are limited to 10 characters.

Note:

Be sure to remove all discs from the disc compartment before moving or transporting the unit!

Radio

Selecting Tuner Band

- Press **TUNER/BAND-APP** on the main unit or **TUNER** on the remote control to select radio mode.
- Select a radio band by pressing **TUNER/BAND-APP** on the main unit or **BAND** on the remote control: FM - Frequency Modulation (87.5 - 108 MHz) MW - Medium Wave (522 - 1511 KHz) LW - Long Wave (150 - 283 KHz)

Auto Preset Programming

Press and hold **TUNER/BAND-APP** on the main unit or **BAND** on the remote control to store station names. A maximum of 30 stations can be stored. Beware of your preset channels being erased accidentally because the scanning and storing process is automatic upon pressing the button. Press any button to stop scanning.

Searching for a Station

- Press **▲** or **▼** to search for a radio station.
- To search automatically, press and hold **▲** or **▼** for 1 second.

Listening to the Preset Station

- Press **TUNER/BAND-APP**.
- Press **PRESET** + / - repeatedly to locate your desired memory location.